

The logo for FITA, with 'FIT' in black and 'a' in orange.

Implementing ICT Accessibility
The challenges and the opportunities

Annual General Meeting

4th December 2009

The logo for FITA, with 'FIT' in black and 'a' in orange.

Implementing ICT Accessibility
The challenges and the opportunities

Most elderly persons are disabled

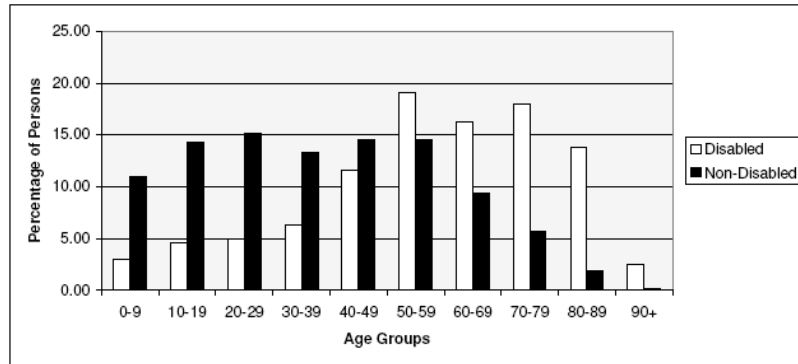


Figure 1.2: Percentage of disabled and non-disabled people by age

23/12/2009

Source: KNPD analysis of NSO Census 2005 data

3 / 8

Access to technology amongst disabled persons is low

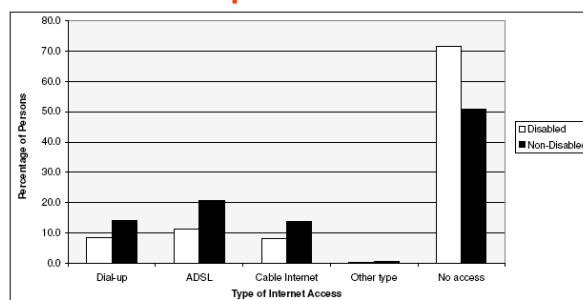


Figure 1.21: Percentage of access to the Internet for disabled and non-disabled people

Internet access	Disabled		Non-Disabled		Total	
	No.	%	No.	%	No.	%
Dial-up	1768	8.4	53190	14.1	54958	13.8
ADSL	2371	11.3	77692	20.6	80063	20.1
Cable Internet	1743	8.3	51541	13.7	53284	13.4
Other type	106	0.5	2606	0.7	2712	0.7
No access	14994	71.5	191516	50.9	206510	51.9
Total	20982	100	376545	100	397527	100

Table 1.21: Access to the Internet for disabled and non-disabled people

23/12/2009

Source: KNPD analysis of NSO Census 2005 data

4 / 8

Most disabled persons were deprived of their right to education... but they are catching up quickly.

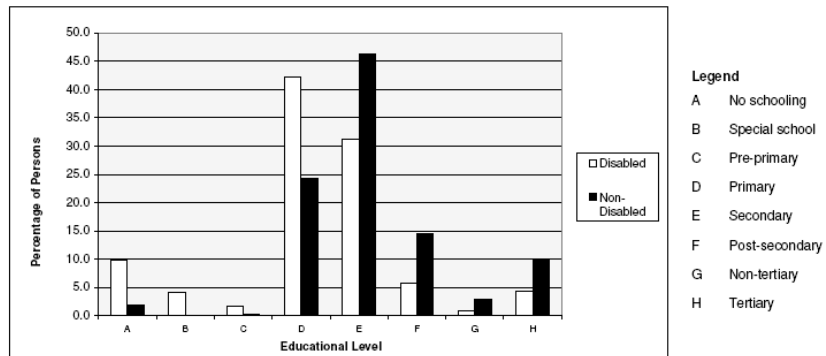


Figure 1.6: Percentage of disabled and non-disabled people and highest educational level achieved

23/12/2009

Source: KNPD analysis of NSO Census 2005 data

5 / 8

Poor literacy levels are a big issue

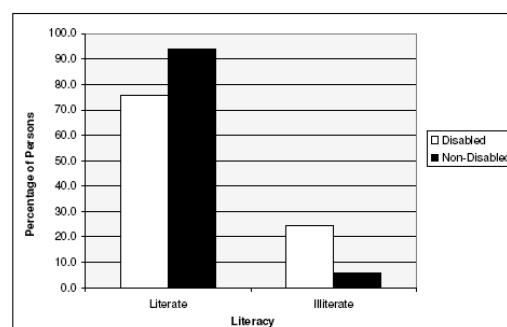


Figure 3.9 Percentage of literacy rates of disabled and non-disabled persons

Literacy/Illiteracy	Disabled		Non-Disabled		Total	
	No.	%	No.	%	No.	%
Literate	17465	75.5	318790	94.0	336255	92.8
Illiterate	5672	24.5	20448	6.0	26121	7.2
Total	23138	100	339238	100	362376	100

Table 3.9 Literacy rates of disabled and non-disabled persons

23/12/2009

Source: KNPD analysis of NSO Census 2005 data

6 / 8

Disabled persons find it difficult to obtain gainful employment

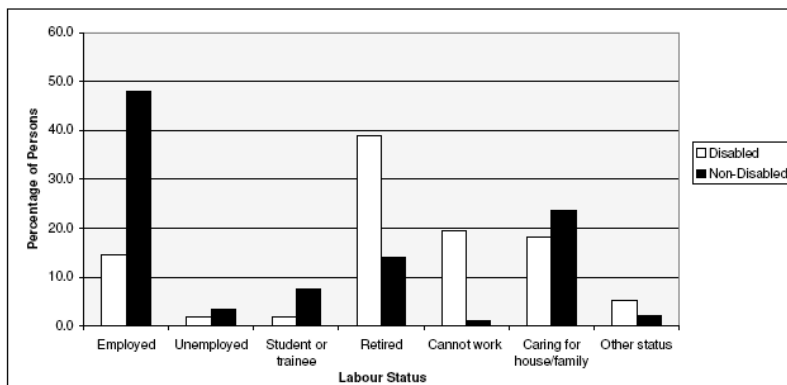


Figure 1.10 Percentage of labour status of disabled and non-disabled persons

23/12/2009

Source: KNPD analysis of NSO Census 2005 data

7 / 8

Disabled persons exhibit a high readiness to start work

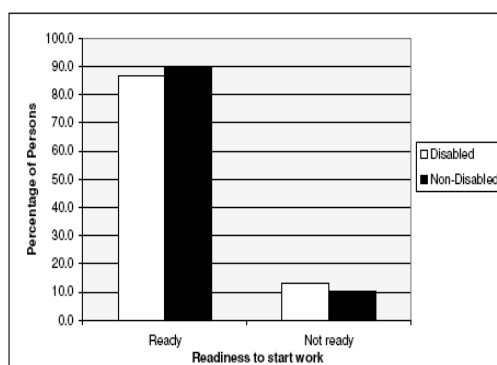


Figure 1.11 Percentage of readiness to start work in non-working disabled and non-disabled populations

23/12/2009

Source: KNPD analysis of NSO Census 2005 data

8 / 8

The logo for FITA, with 'FITA' in black and 'a' in orange.

Implementing ICT Accessibility The challenges and the opportunities

Thank You

Maria Mercieca and Stanley M. Debono